

STARSURGICAL SERIES LED: RECESSED (GRID/FLANGE)

SSR12/SSR14/SSR22/SSR24

SPECIFICATION FEATURES

HOUSING: 20 gauge formed cold rolled steel housing with continuous seam welds. Aluminum and stainless-steel options available.

FRAME: Inset or overlapping doorframe available in aluminum, cold rolled steel, and stainless steel. Extruded inset door available in anodized aluminum or white painted aluminum. Frame held to housing via aircraft cable.

LENS: Available with symmetric or asymmetric acrylic with RFI Grid. Asymmetric lens serves as inner lens with a .080 white frosted acrylic outer lens for smooth surface. Optional prismatic acrylic or polycarbonate installed with smooth side out and does not require additional outer lens. Inset (cold rolled steel, stainless steel and .050 alum) and Overlapping frame uses a rail hold down system.

LED: Available in three color temperatures 3500°K, 4000°K, and 5000°K with maximum 3-step MacAdam variation allowance. Other color temperatures available, consult factory. Minimum 80 CRI standard with optional minimum 90 CRI available. 0-10V dimming available with 10-100% range and 1-100% range. Must specify dimming under options.

FASTENERS: Stainless steel Philips flat head screws with captive cage nuts. Finish to match doorframe.

FINISH: Painted fixtures have a white antimicrobial powder coat finish following multistage iron phosphate pre-treatment. Stainless steel brushed fixtures are brushed on all exposed room-side surfaces.

GASKET: Closed cell EPDM and closed cell silicone gaskets prevent air contaminations from entering the fixture. Gasket seals lens to doorframe and doorframe to housing. Optional triple gasket, must specify Grid or Flange installation.

ORDERING INFORMATION

SERIES	MOUNTING	SIZE	HOUSING	FRAME	LUMEN OUTPUT*
SS	R				
	R = Recessed (Grid/Flange)	12 = 1x2 14 = 1x4 22 = 2x2 24 = 2x4	HC = 20Ga. CRS Painted HS = 20Ga. SS Brushed HP = 20Ga. SS Painted HA = 16Ga. Alum. Painted	INSET (I) or OVERLAP (O) OC = 18Ga. CRS Painted OS = 18Ga. SS Brushed OP = 18Ga. SS Painted OA = 16Ga. Alum Painted IC = 20Ga. CRS Painted IA = 16Ga. Alum Painted IB = 20Ga. SS Brushed IS = 20Ga. SS Painted	SSR12-14: L2 = Low L3 = Standard L4 = High CL = Custom Lumen Output** SSR22-24: L2 = Low L4 = Standard L6 = Medium L8 = High CL = Custom Lumen Output**

*Nominal Size.
Dimensional
Data on Page 3



APPLICATIONS: Surgical Suites, Operating Rooms, Examination Rooms, Isolation Suites, and more.

MOUNTING: Recessed mounting accommodates Grid and Flange installations. Flange installation utilizes adjustable swing arms or can be taped to the side for Grid applications. Grid install compatible with 1-1/2" and 15/16" Grid systems. Mounting for custom ceilings available, consult factory.

LABEL: This product was Made in America and complies with the Buy American Act requirements. Fixture is certified to UL standards for Wet Location under covered ceiling. IP65 rating. Meets ISO 3/Class 1 Cleanrooms. NSF2 Splash/Non-Food Zone.



*Subject to change. Data on Page 2.
** Must be specified at time of quote.
Must not exceed fixture maximum output

COLOR TEMP.	CIRCUITS	LENS	VOLTAGE	OPTIONS
35 = 3500°K 40 = 4000°K 50 = 5000°K	1C = 1 Circuit 2C = 2 Circuits	A = .125 Prismatic Acrylic E = .125 White Frost Poly. H = .125 White Frost Acrylic R = .125 Symmetric Prismatic Acrylic with RFI Grid S = .125 Asymmetric Acrylic with RFI Grid and .080 White Frost Acrylic diffuser	12 = 120V 27 = 277V 34 = 347V UN = Universal (120V-277V)	DM = 0-10V dimming with 10-100% range DM1 = 0-10V dimming with 1-100% range FZ1 = Fuse (120V) FZ2 = Fuse (277V) SD2 = Step Dim. Module (50-100%) SD3 = Step Dim. Module (30-70-100%) EL1 = Emerg. Bat. LED Low (1100-1250 lm)* EL2 = Emerg. Bat. LED High (2200-2500 lm)* RF1 = (RIF) Radio Interference Filter (120V) RF2 = (RIF) Radio Interference Filter (277V) TH = Torx Head screws (with center pin) RM = Row Mount** 90C = 90 CRI TGG = Triple Gasketing (Grid) TGF = Triple Gasketing (Flange) IP66 = IP66 Rated (Overlapping frame only) MS = MIL-STD-461G Certified****

*SSR12 Remote Battery. Consult factory for CA Title 24 options. If stored, batteries should be fully recharged every six months and kept between 0°C-25°C to maintain optimal battery capacity.

** RIF recommended to be used with A or E lens.

** Joiner bracket supplied. Fixture dimensions subject to change.

Consult factory for custom wiring or knockouts.

**** Must specify R or S lens. N/A with UN voltage, must specify voltage.

STARSURGICAL: RECESSED (GRID/FLANGE)

SSR12/SSR14/SSR22/SSR24



PERFORMANCE DATA*

MODEL	OUTPUT	COLOR TEMP	LUMENS DELIVERED	EFFICACY (lm/W)	INPUT POWER (W)
SS12	Low (L2)	3500°K	2875	115	25
		4000°K	3000	120	25
		5000°K	3125	125	25
	Standard (L3)	3500°K	4180	110	38
		4000°K	4370	115	38
		5000°K	4560	120	38
	High (L4)	3500°K	5500	110	50
		4000°K	5750	115	50
		5000°K	6000	120	50
SS14	Low (L2)	3500°K	5750	115	50
		4000°K	6000	120	50
		5000°K	6250	125	50
	Standard (L3)	3500°K	8250	110	75
		4000°K	8625	115	75
		5000°K	9000	120	75
	High (L4)	3500°K	11000	110	100
		4000°K	11500	115	100
		5000°K	12000	120	100
SS22	Low (L2)	3500°K	3000	120	25
		4000°K	3125	125	25
		5000°K	3250	130	25
	Standard (L4)	3500°K	6000	120	50
		4000°K	6250	125	50
		5000°K	6500	130	50
	Medium (L6)	3500°K	8625	115	75
		4000°K	9000	120	75
		5000°K	9375	125	75
	High (L8)	3500°K	11500	115	100
		4000°K	12000	120	100
		5000°K	12500	125	100
SS24	Low (L2)	3500°K	6000	120	50
		4000°K	6250	125	50
		5000°K	6500	130	50
	Standard (L4)	3500°K	12000	120	100
		4000°K	12500	125	100
		5000°K	13000	130	100
	Medium (L6)	3500°K	17250	115	150
		4000°K	18000	120	150
		5000°K	18750	125	150
	High (L8)	3500°K	23000	115	200
		4000°K	24000	120	200
		5000°K	25000	125	200

*Displayed information reflects a base product without options and a .125 Prismatic Polycarbonate lens.

LEDs are frequently updated therefore values may change without notice.

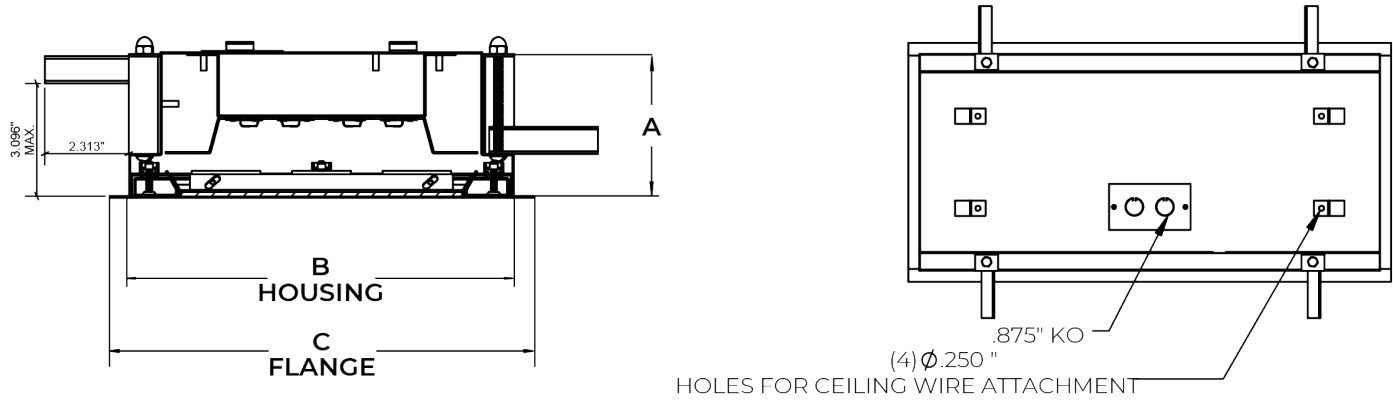
Visit www.newstarlighting.com for additional information and IES files.

Notes:

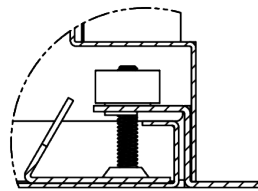
Specifications and Dimensions are subject to change without notice.

For additional options and dimensional details please consult your New Star Lighting Representative.

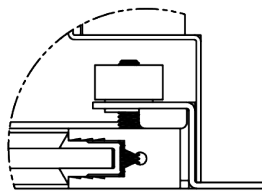
DIMENSIONAL DATA



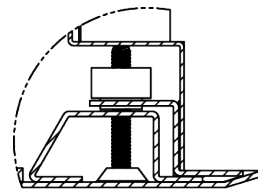
	A	B	C	REC. CEILING CUT-OUT
SSR12	4.00"	10.64" X 22.64"	11.69" X 23.69"	10.88" X 22.88"
SSR14	4.00"	10.64" X 46.64"	11.69" X 47.69"	10.88" X 46.88"
SSR22	4.00"	22.64" X 22.64"	23.69" X 23.69"	22.88" X 22.88"
SSR24	4.00"	22.64" X 46.64"	23.69" X 47.69"	22.88" X 46.88"



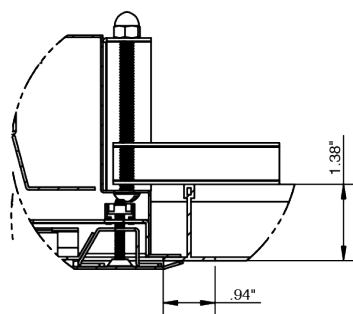
IC FRAME DETAIL



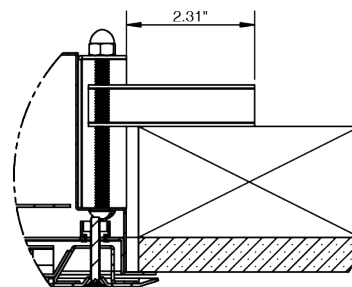
IE FRAME DETAIL



OC FRAME DETAIL



SSR (w/ OC FRAME) RECESSED GRID



SSR (w/ OC FRAME) RECESSED FLANGE