

## STARCLEAN SERIES LED: SURFACE

SCS12/SCS14/SCS22/SCS24

### FEATURES:

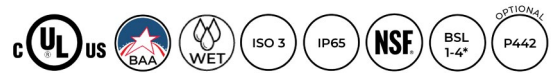
- Intended for Healthcare Settings, Alternative Care Facilities, Cleanrooms, Hospitals, Hi-Tech Manufacturing, Laboratory, Food Processing Facilities, Commercial Kitchens, and more
- Cleanroom troffer available in a 1x2, 1x4, 2x2, 2x4
- Surface installation
- High-output to achieve various lighting level requirements for different applications
- This product was Made in America and complies with the Buy American Act (BAA) requirements



SCS14

### RELATED PRODUCTS:

- [StarClean Surface \(SCS\) Quick Ship Ordering Options](#)
- [StarClean Recessed Series \(SCR\)](#)
- [StarClean Utility \(SCU\)](#)
- [StarClean Surface with Red LEDs \(SCS\)](#)



### SPECIFICATIONS

**HOUSING:** 20 gauge formed cold rolled steel housing with continuous seam welds. Aluminum and stainless steel options available.

**FRAME:** Inset or overlapping doorframe available in aluminum, cold rolled steel, and stainless steel. Extruded inset door available in anodized aluminum or white painted aluminum. Frame held to housing via aircraft cable.

**LENS:** Acrylic or polycarbonate lens options - smooth side out. Inset and overlapping frame uses a rail hold down system.

**LED:** Available in three color temperatures 3500K, 4000K, and 5000K with maximum 3-step MacAdam variation allowance. Other color temperatures available, consult factory. Minimum 80 CRI standard with optional minimum 90 CRI available.

**ELECTRICAL:** 0-10V dimming available with 10-100% range and 1-100% range. Must specify dimming under options.

**FASTENERS:** Stainless steel Philips flat head screws with captive cage nuts. Finish to match doorframe.

**FINISH:** White antimicrobial powder coat finish following multistage iron phosphate pretreatment. Stainless steel brushed fixtures are brushed on all exposed room-side surfaces.

**GASKET:** Closed cell EPDM and closed cell silicone gaskets prevent air contaminations from entering the fixture. Gasketing seals lens to doorframe and doorframe to housing. Optional triple gasketing, must specify Grid or Flange installation.

**INSTALLATION:** Surface installation. Hardware by others. Mounting for custom ceilings available, consult factory.

**WARRANTY:** Limited five (5) year warranty.

**LABEL:** Fixture is certified to UL standards for Wet Location under covered ceiling. IP65 rating. Meets ISO 3/Class 1 Cleanrooms. NSF2 Splash/Non-Food Zone. \*Suitable for Biosafety Labs rated BSL 1 to 4 when specifying optional NSF Protocol P442 rating.

This product was Made in America and complies with the Buy American Act (BAA) requirements. Specifications and dimensions are subject to change without notice. For additional options and dimensional details, please consult your New Star Lighting representative.

## STARCLEAN SERIES LED: SURFACE

SCS12/SCS14/SCS22/SCS24

### ORDERING INFORMATION

EXAMPLE: SCS14-HC/OC-L4401C-A-UN

SERIES	MOUNTING	SIZE*	HOUSING	FRAME*	LUMEN OUTPUT*
SC	S				
	S = Surface	12 = 1x2 14 = 1x4 22 = 2x2 24 = 2x4	HC = 20Ga. CRS Painted HS = 20Ga. SS Brushed HP = 20Ga. SS Painted HA = 16Ga. Alum. Painted	INSET (I)* or OVERLAP (O) OC = 18Ga. CRS Painted OS = 18Ga. SS Brushed OP = 18Ga. SS Painted OA = 16Ga. Alum Painted IE = Extruded Alum** IP = Extruded Alum Painted** IC = 20Ga. CRS Painted* IA = 16Ga. Alum Painted* IB = 20Ga. SS Brushed* IS = 20Ga. SS Painted*	SCS12-14: L2 = Low L3 = Standard L4 = High CL = Custom Lumen Output** SCS22-24: L2 = Low L4 = Standard L6 = Medium L8 = High CL = Custom Lumen Output**

\*Nominal Size.  
Dimensional  
Data on Page 4.

\*Inset frames (I) suitable for Biosafety Labs (BSL) rated 1-2 only. 3.  
 \*\*Not IP65. N/A with .187 Prismatic Poly. Lens.  
 \*\*Subject to change. Performance Data on page  
 \*\* Must be specified at time of quote. Must not exceed fixture maximum output.

COLOR TEMP.	CIRCUITS	LENS	VOLTAGE	OPTIONS
35 = 3500K	1C = 1 Circuit	A = .125 Prismatic Acrylic	12 = 120V	DM = 0-10V dimming with 10-100% range
40 = 4000K	2C = 2 Circuits*	B = .125 Prismatic Poly.	27 = 277V	DM1 = 0-10V dimming with 1-100% range
50 = 5000K		C = .156 Prismatic Poly.	34 = 347V	FZ1 = Fuse (120V)
	*Allows for Inboard/ Outboard control.	D = .187 Prismatic Poly.*	UN = Universal (120V-277V)	FZ2 = Fuse (277V)
		E = .125 White Frost Poly.		SD2 = Step Dim. Module (50-100%)*
		G = .140 Prismatic DR Acrylic		SD3 = Step Dim. Module (30-70-100%)*
		*Cannot be used with IE/IP.		EL1 = Emerg. Batt. LED Low (10W)**
				EL2 = Emerg. Batt. LED High (20W)**
				RF = (RIF) Radio Intereference Filter
				TH = Torx Head screws (with center pin)
				RM = Row Mount (N/A with P442 Option)***
				90C = 90 CRI
				IP66 = IP66 Rated (Overlapping frame only)
				P442 = NSF P442 Certified (Required for BSL 1-4)

\*Consult factory for 347V.  
 \*\*SCS12 Remote Battery. Consult factory for CA Title 24 options. If stored, batteries should be fully recharged every six months and kept between 0°C-25°C to maintain optimal battery capacity.  
 \*\*\*Joiner bracket supplied. Fixture dimensions subject to change. Consult factory for custom wiring or knockouts.

This product was Made in America and complies with the Buy American Act (BAA) requirements. Specifications and dimensions are subject to change without notice. For additional options and dimensional details, please consult your New Star Lighting representative.

# STARCLEAN SERIES LED: SURFACE

SCS12/SCS14/SCS22/SCS24



## PERFORMANCE DATA\*

\*Displayed information is with a .125 Prismatic Polycarbonate. Data is with 80 CRI chip. LEDs are frequently updated therefore values may change without notice.

MODEL	OUTPUT	COLOR TEMP.	LUMENS DELIVERED	EFFICACY (lm/W)	INPUT POWER (W)
SC12	L2 = Low	3500°K	2875	115	25
		4000°K	3000	120	25
		5000°K	3125	125	25
	L3 = Standard	3500°K	4180	110	38
		4000°K	4370	115	38
		5000°K	4560	120	38
	L4 = High	3500°K	5500	110	50
		4000°K	5750	115	50
		5000°K	6000	120	50
SC14	L2 = Low	3500°K	5750	115	50
		4000°K	6000	120	50
		5000°K	6250	125	50
	L3 = Standard	3500°K	8250	110	75
		4000°K	8625	115	75
		5000°K	9000	120	75
	L4 = High	3500°K	11000	110	100
		4000°K	11500	115	100
		5000°K	12000	120	100
SC22	L2 = Low	3500°K	3000	120	25
		4000°K	3125	125	25
		5000°K	3250	130	25
	L4 = Standard	3500°K	6000	120	50
		4000°K	6250	125	50
		5000°K	6500	130	50
	L6 = Medium	3500°K	8625	115	75
		4000°K	9000	120	75
		5000°K	9375	125	75
L8 = High	3500°K	11500	115	100	
	4000°K	12000	120	100	
	5000°K	12500	125	100	
SC24	L2 = Low	3500°K	6000	120	50
		4000°K	6250	125	50
		5000°K	6500	130	50
	L4 = Standard	3500°K	12000	120	100
		4000°K	12500	125	100
		5000°K	13000	130	100
	L6 = Medium	3500°K	17250	115	150
		4000°K	18000	120	150
		5000°K	18750	125	150
L8 = High	3500°K	23000	115	200	
	4000°K	24000	120	200	
	5000°K	25000	125	200	

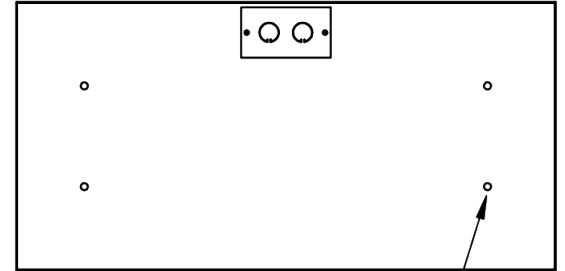
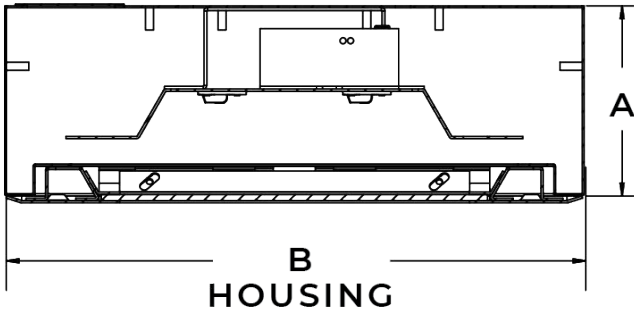
# STARCLEAN SERIES LED: SURFACE

SCS12/SCS14/SCS22/SCS24

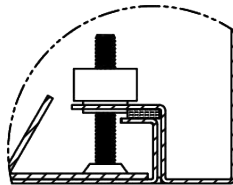


## DIMENSIONAL DATA

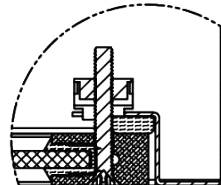
Fixture weight varies and is dependent upon chosen specifications. Consult factory for additional information. Average weight of the SCS14 is 27lb. Average weight of the SCS24 is 48lb.



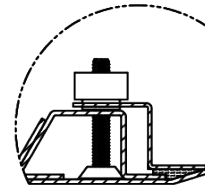
SC12: (4) Ø.31" HOLE  
 SC14: (6) Ø.31" HOLE  
 SC22: (4) Ø.31" HOLE  
 SC24: (6) Ø.31" HOLE



INSET FRAME



ALUMINUM EXTRUDED  
INSET FRAME



OVERLAPPING FRAME

	A	B
SCS12	3.94"	12.00" x 24.07"
SCS14	3.94"	12.00" x 48.07"
SCS22	3.94"	24.00" x 24.07"
SCS24	3.94"	24.00" x 48.07"

This product was Made in America and complies with the Buy American Act (BAA) requirements. Specifications and dimensions are subject to change without notice. For additional options and dimensional details, please consult your New Star Lighting representative.