

SCULPTURE UP/DOWN SCONCE SERIES

SL1/SL2/SL3/SL4

FEATURES:

- Intended for VR Applications, Public Areas, Corridors, Walkways, Lobbies, Exteriors and Entryways, Façade, Commercial Settings, and more
- Available in 1ft, 2ft, 3ft, and 4ft
- Contemporary and versatile design complements a wide range of architectural styles
- Offered in triangle, round, and square style housings
- Provides up and down illumination
- Back box produces a gentle glow to any wall surface
- This product is Made in America and complies with the Buy American Act (BAA) requirements



RELATED PRODUCTS:

- [Sculpture Up Sconce Series \(SL-U\)](#)
- [Sculpture Down Sconce Series \(SL-D\)](#)
- [Round Lampa LED Series \(LAMRV\)](#)

SPECIFICATIONS

HOUSING: Die formed, seam welded, and ground smooth housing in aluminum, stainless steel, or cold rolled steel. Aluminum is not recommended for VR applications. Housing available in three styles: Triangle, Round, or Square. Slot pattern standard, additional design patterns available, see page 3. Backbox to match housing.

LENS: .125 impact resistant white frosted polycarbonate lens.

LED: Available in four color temperatures: 3000K, 3500K, 4000K, and 5000K with maximum 3-step MacAdam variation allowance. Minimum 80 CRI standard. Functions are jointly controlled. Consult factory for additional options.

DRIVER: Provides up and down, down only, or up only illumination. Standard 0-10V dimming driver with 10-100% range. Consult factory for additional options. Optional remote emergency battery. Emergency battery requires a remote-mounted test switch, by others.

BACK BOX: Back box emits soft illumination, enhancing the aesthetic appeal of wall surface. Back box wattages: SL1: 6W, SL2: 13W, SL3: 19W, SL4: 25W

FASTENERS: Tamper resistant Torx® head screws.

FINISH: Durable powder coat finish available in black (standard), bronze, or matte white. Custom colors available, must specify RAL number. If stainless steel brushed (HS) is specified, do not specify a paint finish.

INSTALLATION: Surface installation. Hardware by others.

WARRANTY: New Star Promise. Limited five (5) year warranty.

LABEL: Fixture is certified to UL standards by Intertek Testing Laboratory for Wet Locations (under covered ceilings). Optional IP65 Rating. ADA compliant. This product is Made in America and complies with the Buy American Act (BAA) requirements.

Specifications and dimensions are subject to change without notice. For additional options and dimensional details, please consult your New Star Lighting representative.

SCULPTURE UP/DOWN SCONCE SERIES

SL1/SL2/SL3/SL4

ORDERING INFORMATION

EXAMPLE: SL1T-HA-ST-UD-LW301C-W-UN-BK

| SERIES | SIZE* | MODEL | HOUSING | DESIGN* | CONSTRUCTION | LUMEN OUTPUT* |
|--------|--|--------------|--|---------------------------------|--------------|------------------------------|
| SL | | | | | UD | |
| | 1 = 1ft | T = Triangle | HA = 16Ga. Alum. Painted | ST = Slot (Standard) | UD = Up/Down | LW = Low |
| | 2 = 2ft | R = Round | HS20 = 20Ga. SS Brushed | CB = Cubi | | ST = Standard |
| | 3 = 3ft | S = Square | HP20 = 20Ga. SS Painted | TA = Tetra | | |
| | 4 = 4ft | | HC20 = 20Ga. CRS Painted* | OB = Orbita | | *Performance data on page 3. |
| | | | HS18 = 18Ga. SS Brushed | DA = Diamant | | |
| | | | HP18 = 18Ga. SS Painted | | | |
| | | | HC18 = 18Ga. CRS Painted* | | | |
| | *Nominal size. Dimensional data on page 4. | | | *Decorative patterns on page 3. | | |
| | | | *Not recommended for outdoor applications. | | | |

| COLOR TEMP.* | CIRCUITS* | DISTIBUTION | VOLTAGE | FINISH | OPTIONS |
|--------------|--|-------------|----------------------------|--------------------|-------------------------|
| | 1C | W | | | |
| 30 = 3000K | 1C = 1 Circuit | W = Wide | 12 = 120V | BK = Black | FZ1 = Fuse (120V) |
| 35 = 3500K | | | 27 = 277V | WH = White | FZ2 = Fuse (277V) |
| 40 = 4000K | *Functions are jointly controlled. Consult factory for additional options. | | UN = Universal (120V-277V) | BZ = Bronze | EM = Emergency Battery* |
| 50 = 5000K | | | | CC = Custom Color* | IP65 = IP65 Rating |

*Specified temp. will be for all functions.

*If stainless steel brushed (HS) is specified, leave blank.
 **Must specify RAL number and if antimicrobial finish is needed at time of order. Subject to set-up fees.

*EM will be remote for 1ft.

SCULPTURE UP/DOWN SCONCE SERIES

SL1/SL2/SL3/SL4



PERFORMANCE DATA*

*Data is with 80 CRI chip at 4000K. LEDs are frequently updated therefore values may change without notice.

| MODEL | OUTPUT | FUNCTION | LUMENS DELIVERED | EFFICACY (lm/W) | INPUT POWER (W) |
|-------|---------------|----------|------------------|-----------------|-----------------|
| SL1 | LW = Low | Up | 270 | 45 | 6 |
| | | Down | 270 | 45 | 6 |
| | ST = Standard | Up | 585 | 45 | 13 |
| | | Down | 585 | 45 | 13 |
| | - | Front | 240 | 40 | 6 |
| SL2 | LW = Low | Up | 270 | 45 | 6 |
| | | Down | 270 | 45 | 6 |
| | ST = Standard | Up | 585 | 45 | 13 |
| | | Down | 585 | 45 | 13 |
| | - | Front | 520 | 40 | 13 |
| SL3 | LW = Low | Up | 270 | 45 | 6 |
| | | Down | 270 | 45 | 6 |
| | ST = Standard | Up | 585 | 45 | 13 |
| | | Down | 585 | 45 | 13 |
| | - | Front | 760 | 40 | 19 |
| SL4 | LW = Low | Up | 270 | 45 | 6 |
| | | Down | 270 | 45 | 6 |
| | ST = Standard | Up | 585 | 45 | 13 |
| | | Down | 585 | 45 | 13 |
| | - | Front | 1000 | 40 | 25 |

DECORATIVE PATTERN DESIGNS



TETRA (TA)



CUBI (CB)



ORBITA (OB)



DIAMENT (DA)

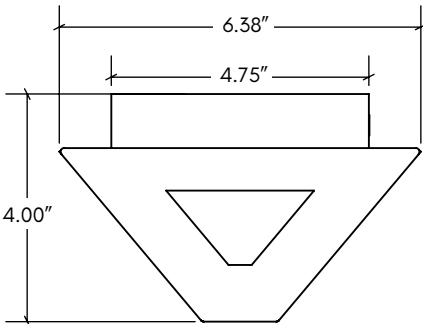
Specifications and dimensions are subject to change without notice. For additional options and dimensional details, please consult your New Star Lighting representative.

SCULPTURE UP/DOWN SCONCE SERIES

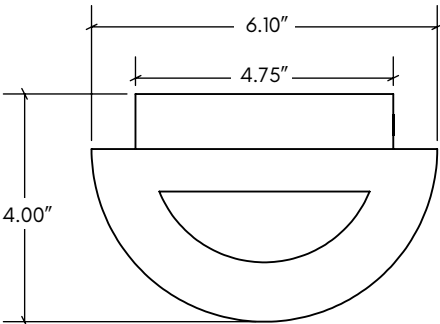
SL1/SL2/SL3/SL4



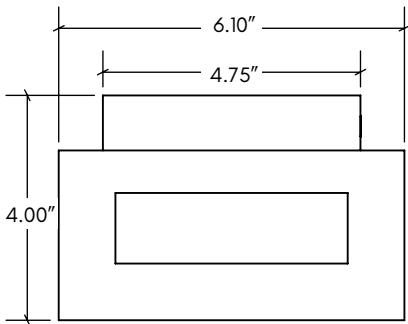
DIMENSIONAL DATA



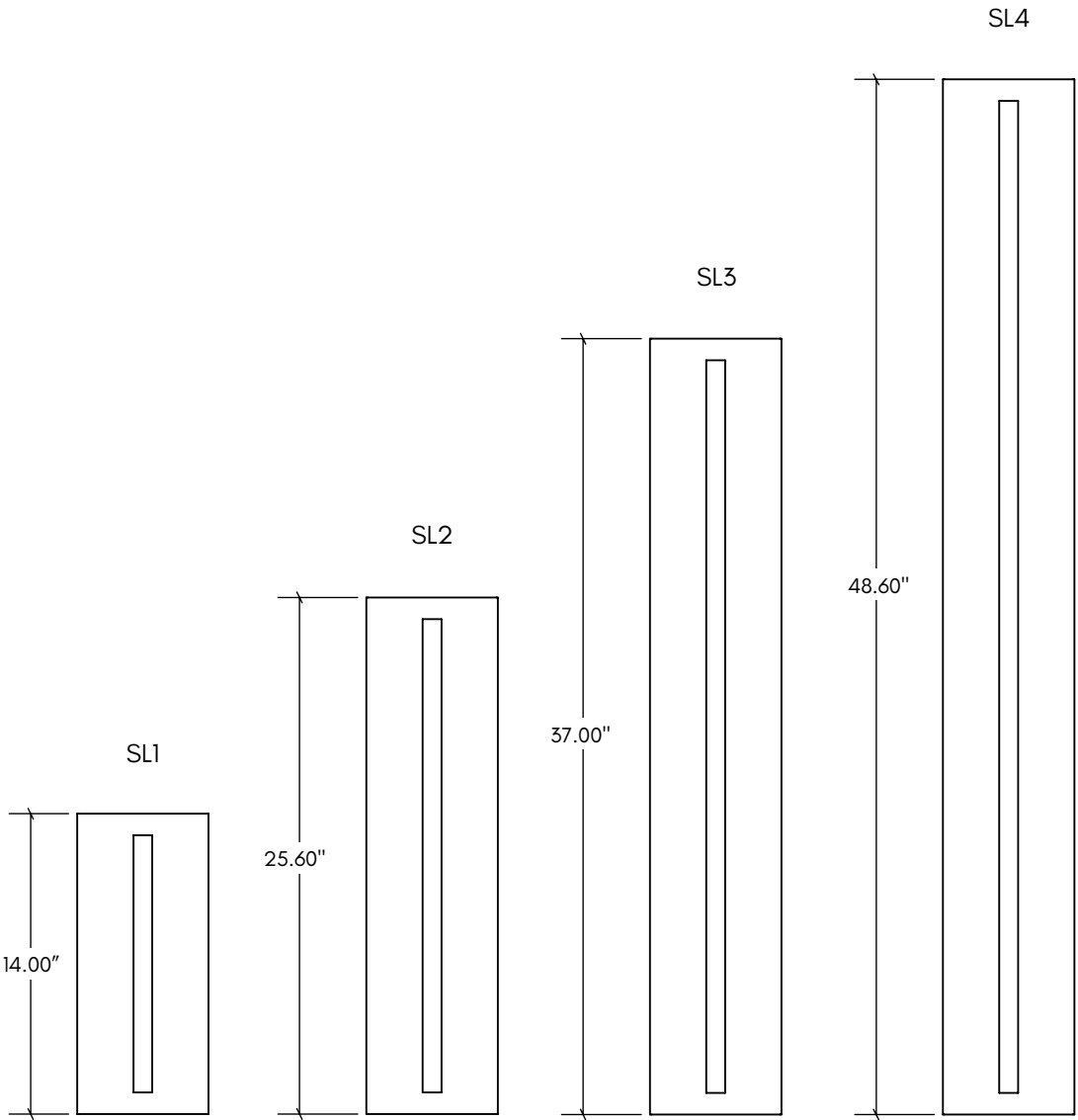
TRIANGLE



ROUND



SQUARE



Specifications and dimensions are subject to change without notice. For additional options and dimensional details, please consult your New Star Lighting representative.