

## STARMED DOS+1 SERIES LED

### SMDOSG22/SMDOSG24/SMDOSF22/SMDOSF24

#### SPECIFICATION FEATURES

**CONSTRUCTION:** 20 gauge formed cold rolled steel housing seam welded and ground smooth. Stainless steel option available. Optional inset frame with clear polycarbonate lens to provide surface for easy cleaning. Frame fastened to housing via hinge.

**LENS:** Ambient lens is white polycarbonate. Exam lens is available in clear ribbed acrylic or white frosted ribbed acrylic (recommended).

**LED:** Ambient and exam compartments available in three color temperatures 3500°K, 4000°K and 5000°K with maximum 3-step MacAdam variation allowance. Minimum 80 CRI standard. Optional minimum 90 CRI available on Ambient and Exam compartments. Optional reading lights are 3000°K non-dimmable.

**ELECTRONICS:** 0-10V dimming available with 10-100% range and 1-100% range for Ambient compartment. Must specify dimming under options. Optional low voltage controller provides control of lighting from a pillow speaker, bed side rail or wall switch. LV2 controls ambient and reading functions without dimming (on/off function only). If Exam and Night Light function are specified with LV2, functions will be non-dimming and provided on separate line voltage circuits. Must specify voltage for LV2. LV3 controls ambient function with dimming and reading with dimming. If Exam and Night Light function are specified with LV3, functions will be non-dimming and provided on separate line voltage circuits. LV2 and LV3 are not compatible with the emergency battery. Other hardware/accessories sold by others.

**FINISH:** White antimicrobial powder coat finish following multistage iron phosphate pre-treatment on all exposed room-side surfaces.



**APPLICATIONS:** Patient Room 3 Compartment (Exam, Ambient and Reading), Hospitals, Skilled Nursing, Examination Rooms, and more.

**MOUNTING:** Grid and Flange mounting available. Flange fixtures supplied with yokes for installation. Hardware by others.

**LABEL:** Fixture is certified to UL standards by Intertek Testing Laboratories.



#### ORDERING INFORMATION

Example: SMDOSG24-HC/ICA-L340-L240-RL-FA-UN

SERIES	MOUNTING	SIZE*	HOUSING	INSET FRAME*	FRAME LENS*	AMBIENT LUMEN OUTPUT*	AMBIENT COLOR TEMP.
SMDOS							
	G = Grid	22 = 2x2	HC = 20Ga. CRS Painted	Blank = No Frame	Blank = No Lens	L1 = Low	35 = 3500°K
	F = Flange	24 = 2x4	HP = 20Ga. SS Painted	IC = 18Ga. CRS Painted	A = .125 Clear Poly.	L2 = Medium	40 = 4000°K
			HA = 16Ga. Alum. Painted	IA = 16Ga. Alum. Painted	1 = .187 Clear Poly.	L3 = High	50 = 5000°K
		*Nominal Size. Dimensional Data on Page 4.		*Optional frame. Frame provides surface for easy cleaning. Must specify Frame Lens if frame is chosen. Frame increases depth of fixture to 6.25".	*If no frame is selected, no frame lens will be provided.	*Subject to change. Performance Data on page 3. Ambient lens is a White. Poly.	

EXAM LUMEN OUTPUT*	EXAM COLOR TEMP.	READING LIGHT	EXAM LENS	VOLTAGE	OPTIONS

L1 = Low (SMDOS24 Only)

35 = 3500°K

B = None

CA = Clear Ribbed Acrylic

12 = 120V

DM = 0-10V dimming with 10-100% range

L2 = High

40 = 4000°K

RL = 2 LED Lights\*

FA = Frosted Ribbed Acrylic

27 = 277V

DM1 = 0-10V dimming with 1-100% range

50 = 5000°K

\*3000°K non-dimmable swivel puck lights.

UN = Universal

(120V-277V)

FZ1 = Fuse (120V)

FZ2 = Fuse (277V)

RF = (RIF) Radio Interference Filter

AML = Antimic. Lens (Ambient and Exam)\*

LN = LED Night Light\*\*

90C = 90 CRI (Ambient & Exam)

EL1 = Emerg. Bat. LED Low (10W)\*\*\*

EL2 = Emerg. Bat. LED High (20W)\*\*\*

LV2 = On/Off Curbell Low Voltage Controller\*\*\*\*

LV3 = Dimming Curbell Low Voltage Controller\*\*\*\*\*

\*N/A with frame.

\*\*3500°K non-dimming Night Light with integrated switch allows light levels at 100%, 70%, 40% and 10%. Located in Ambient compartment. N/A with High Ambient Lumen Output (L3).

\*\*\*Illuminate Ambient compartment. Integral test switch located on reflector.

\*\*\*\*LV2 controls ambient and reading functions without dimming (on/off function only). Exam and Night Light (if specified) are on separate line voltage circuits. Must specify voltage. N/A with emergency battery.

\*\*\*\*\*LV3 controls ambient function with dimming and on/off reading function. Exam and Night Light (if specified) are non-dimming and provided on separate line voltage circuits. N/A with emergency battery.

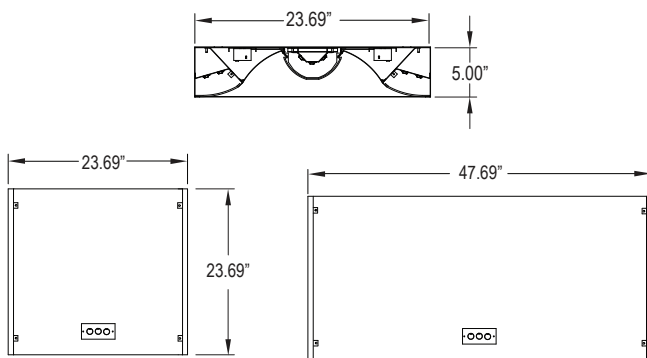
## PERFORMANCE DATA\*

MODEL	FUNCTION	OUTPUT	COLOR TEMP.	LUMENS DELIVERED	EFFICACY (lm/W)	INPUT POWER (W)
SMDOS22	Ambient	Low (L1)	4000°K	1265	101	12.5
		Standard (L2)	4000°K	2525	101	25
		High (L3)	4000°K	3790	101	37.5
	Exam	High (L2)	4000°K	5500	110	50
SMDOS24	Ambient	Low (L1)	4000°K	2525	101	25
		Standard (L2)	4000°K	5050	101	50
		High (L3)	4000°K	7575	101	75
	Exam	Low (L1)	4000°K	5500	110	50
		High (L2)	4000°K	11000	110	100
	Reading Light	-	3000°K	461	76	6

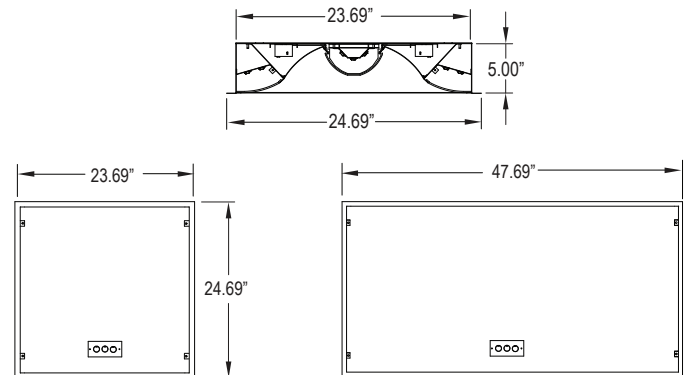
\*Subject to change without notice. Data with 80CRI. Visit [www.newstarlighting.com](http://www.newstarlighting.com) for additional information and IES files.

## DIMENSIONAL DATA

### GRID



### FLANGE



Flange Recommended Opening:  
 22: 24 1/16" x 23 1/8"  
 24: 47 1/8" x 24 1/16"