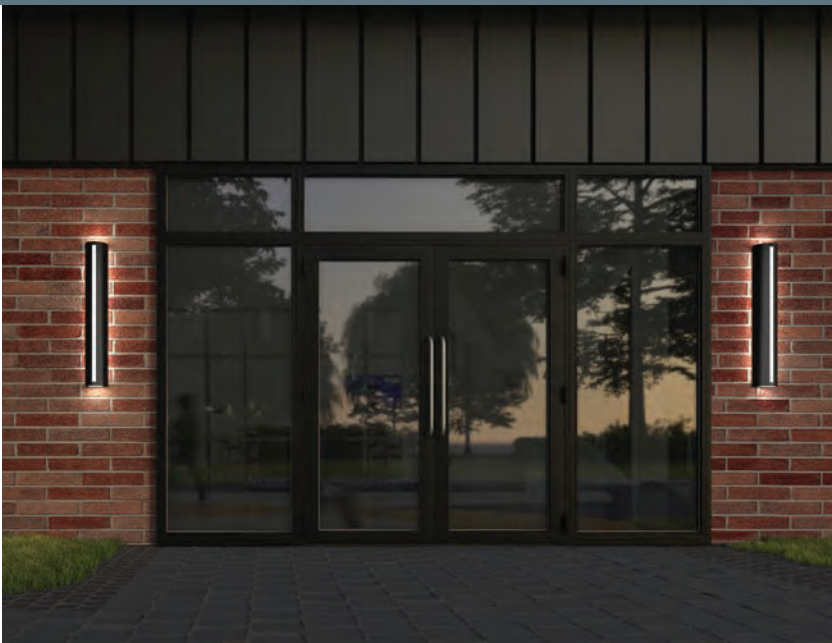


THE SCULPTURE™ SERIES

A contemporary family of vandal resistant sconces, ideal for building facades, public areas, corridors, lobbies, and other areas where durability is desired. Available in multiple lengths and housing shapes, these versatile luminaires feature uplight, downlight, and backlit illumination that provides a gentle glow to any wall surface.



The Sculpture Series is available with optional decorative faceplates:



TETRA

CUBI

ORBITA

DIAMANT



The Sculpture Series is covered by our New Star Promise.

Our promise means we will repair or replace any of our High Abuse or Vandal Resistant architectural luminaires when installed according to our instructions for the life of the original installation if the fixture should fail due to physical abuse.*

*Exclusions to the New Star Promise are gunfire and chemical reactions

Available in three shapes – round, triangle and square – and four lengths (nominal 1' – 4'), the Sculpture Series can be scaled for any application.



ROUND

TRIANGLE

SQUARE



ADDITIONAL FEATURES INCLUDE:

- Low profile, ADA-compliant housings that provide uplight, downlight, and edgelit illumination
- Constructed of die-formed, seam-welded aluminum, stainless steel or cold rolled steel housings
- Impact-resistant polycarbonate lens
- Standard polyester powder coat finishes in black, bronze or white. Custom colors also available.
- Four CCT options – 3000K, 3500K, 4000K, and 5000K
- 0-10V Dimming to 1-100% range
- Provides 270-1000 delivered lumens (refer to specification sheet)
- Tamper-resistant Torx® fasteners
- IP65 rating for exterior applications
- Safeguarded by New Star Promise Warranty

 **NewStar**Lighting

 **NewStar**Lighting

2225 W Pershing Rd, Chicago, IL 60609

(773) 847-1400

www.newstarlighting.com

© 2024, New Star Lighting. All rights reserved. Unauthorized duplication or distribution is prohibited.

THE SCULPTURE™ SERIES