

STARCLEAN CORNER LED

SCC12/SCC14

SPECIFICATION FEATURES

HOUSING: 20 gauge formed cold rolled steel housing with continuous seam welds. Aluminum and stainless steel options available.

FRAME: Inset or overlapping doorframe available in aluminum, cold rolled steel, and stainless steel. Extruded inset door available in anodized aluminum or white painted aluminum. Frame held to housing via aircraft cable.

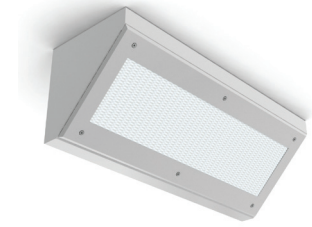
LENS: Acrylic lens with smooth side out. Alternate lens options available including Prismatic Polycarbonate and a White Frosted Polycarbonate. Inset (cold rolled steel, stainless steel and .050 alum) and Overlapping frame uses a rail hold down system.

LED: Available in three color temperatures 3500°K, 4000°K and 5000°K. Other color temperatures available, consult factory. 0-10V dimming available with 10-100% range and 1-100% range. Must specify dimming under options.

FASTENERS: Stainless steel Philips flat head screws with captive cage nuts. Finish to match housing.

FINISH: White antimicrobial powder coat finish following multistage iron phosphate pre-treatment.

GASKET: Closed cell EPDM and closed cell silicone gaskets prevent air contaminations from entering the fixture.



APPLICATIONS: Cleanrooms, Hospitals, Hi-Tech Manufacturing, Laboratory, Food Processing Facilities, Commercial Kitchens, and more.

MOUNTING: Corner Surface.

LABEL: Fixture is certified to UL standards for Wet Location under covered ceilings. Certified IP65, ISO4, and NSF.



ORDERING INFORMATION

Example: SCC14-HC/OC-L2401C-A-UN

SERIES	MOUNTING	SIZE	HOUSING	FRAME	LUMEN OUTPUT*
SC	C = Corner Surface	12 = 1x2 14 = 1x4	HC = 20Ga. CRS Painted HS = 20Ga. SS Brushed HP = 20Ga. SS Painted HA = 16Ga. Alum. Painted	INSET (I) or OVERLAP (O) OC = 18Ga. CRS Painted OS = 18Ga. SS Brushed OP = 18Ga. SS Painted OA = 16Ga. Alum Painted IE = Extruded Alum** IP = Extruded Alum Painted** IC = 20Ga. CRS Painted IA = 16Ga. Alum Painted IB = 20Ga. SS Brushed IS = 20Ga. SS Painted	L2 = Standard L3 = High *Subject to change
		*Nominal Size. Dimensional Data on Page 2			
				** Not IP65. N/A with .187 Prismatic Poly. lens	

COLOR TEMP.	CIRCUITS	LENS	VOLTAGE	OPTIONS
35 = 3500°K 40 = 4000°K 50 = 5000°K	1C = 1 Circuit 2C = 2 Circuits	A = .125 Prismatic Acrylic B = .125 Prismatic Poly. C = .156 Prismatic Poly. D = .187 Prismatic Poly.* E = .125 White Frost Poly. G = .140 DR Acrylic	12 = 120V 27 = 277V 34 = 347V UN = Universal (120V-277V)	FZ = Fuse* DM = 0-10V dimming with 10-100% range DM1 = 0-10V dimming with 1-100% range SD2 = Step Dim. Module (50-100%) SD3 = Step Dim. Module (25-50-100%) EL1 = Emerg. Bat. LED Low (1100-1250 lm) EL2 = Emerg. Bat. LED High (2200-2500 lm) RF = (RIF) Radio Interference Filter* TH = Torx Head screws (with center pin) CEL1 = CA Title 24 Emerg. Batt LED Low
		* Cannot use with IE or IP		
				* Cannot use with UN voltage

STARCLEAN CORNER LED

SCC12/SCC14

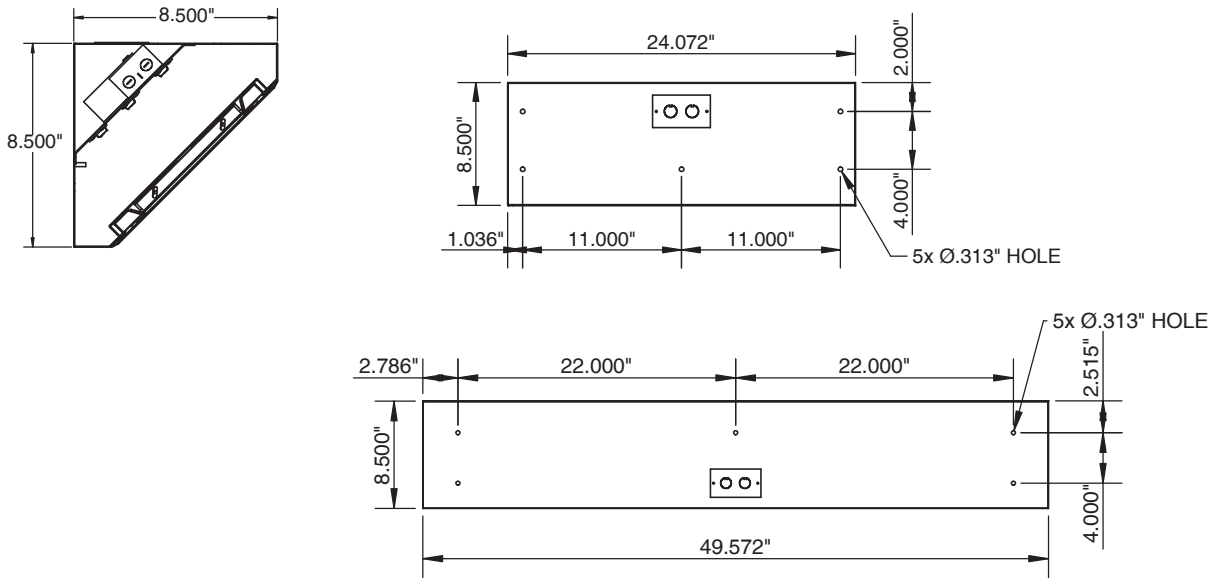


PERFORMANCE DATA*

MODEL	OUTPUT	COLOR TEMP	LUMENS DELIVERED	EFFICACY (lm/W)	INPUT POWER (W)
SCC12	Standard	3500°K	2875	115	25
		4000°K	3000	120	25
		5000°K	3125	125	25
	High	3500°K	4180	110	38
		4000°K	4370	115	38
		5000°K	4560	120	38
SCC14	Standard	3500°K	5750	115	50
		4000°K	6000	120	50
		5000°K	6250	125	50
	High	3500°K	8250	110	75
		4000°K	8625	115	75
		5000°K	9000	120	75

Displayed information is with a .125 Prismatic Polycarbonate. *Subject to change without notice. Visit www.newstarlighting.com for additional information and IES files.

DIMENSIONAL DATA



Notes:
 Specifications and Dimensions are subject to change without notice.
 For additional options and dimensional details please consult your New Star Lighting