

## STARCLEAN SERIES: RED LED

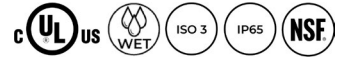
SCS12/SCS14/SCS22/SCS24/SCR12/SCR14/SCR22/SCR24

### FEATURES:

- Intended for Vivariums, Cleanrooms, Laboratories, Research Facilities and more
- Narrow-spectrum 630nm red LEDs. Troffer can have all red LEDs or have alternating rows of red and white LEDs
- Cleanroom troffer available in a 1x2, 1x4, 2x2, 2x4
- Surface or recessed ceiling mount; grid or flange
- Fixture is certified to UL standards for Wet Location under covered ceiling. IP65 rating. Meets ISO 3/Class 1 Cleanrooms. NSF2 Splash/Non-Food Zone
- This product was Made in America and complies with the Buy American Act requirements



SCR12



### RELATED PRODUCTS:

- [StarClean Surface Series \(SCS\)](#)
- [StarClean Recessed Series \(SCR\)](#)
- [StarClean Utility \(SCU\)](#)

### SPECIFICATIONS

**HOUSING:** 20 gauge formed cold rolled steel housing with continuous seam welds. Aluminum and stainless steel options available.

**FRAME:** Inset or overlapping doorframe available in aluminum, cold rolled steel, and stainless steel. Extruded inset door available in anodized aluminum or white painted aluminum. Frame held to housing via aircraft cable.

**LENS:** Acrylic or polycarbonate lens options - smooth side out. Inset (cold rolled steel, stainless steel and 16 gauge alum) and overlapping frame uses a rail hold down system.

**LED:** Available with 630nm red LEDs only or alternating rows of red and white LEDs. White LEDs available in three color temperatures 3500°K, 4000°K and 5000°K with maximum 3-step MacAdam variation allowance. Other color temperatures available, consult factory. Minimum 80 CRI standard with optional minimum 90 CRI available. Note, red LED boards will be installed every other row unless otherwise specified.

**ELECTRICAL:** Red LEDs and White LEDs are separately circuited for individual control. 0-10V dimming available with 10-100% range and 1-100% range on red and white circuits. Must specify dimming under options.

**FASTENERS:** Stainless steel Phillips flat head screws with captive cage nuts. Finish to match doorframe.

**FINISH:** White antimicrobial powder coat finish following multistage iron phosphate pretreatment. Stainless steel brushed fixtures are brushed on all exposed room-side surfaces.

**GASKET:** Closed cell EPDM and closed cell silicone gaskets prevent air contaminations from entering the fixture. Gasketing seals lens to doorframe and doorframe to housing. Optional triple gasketing, must specify Grid or Flange installation. Triple gasketing not applicable with Surface installation.

**INSTALLATION:** Surface or recessed mounting. Recessed mounting accommodates Grid and Flange installations. Recessed fixtures will be supplied with adjustable swing arms that can be used for Flange applications or taped to the side for Grid applications. Recessed install compatible with 1-1/2" and 15/16" Grid systems. Mounting for custom ceilings available, consult factory. Hardware by others.

**WARRANTY:** Limited five (5) year warranty.

**LABEL:** Fixture is certified to UL standards for Wet Location under covered ceiling. IP65 rating. Meets ISO 3/Class 1 Cleanrooms. NSF2 Splash/Non-Food Zone.

This product was Made in America and complies with the Buy American Act requirements. Specifications and dimensions are subject to change without notice. For additional options and dimensional details, please consult your New Star Lighting representative.

## STARCLEAN SERIES: RED LED

SCS12/SCS14/SCS22/SCS24/SCR12/SCR14/SCR22/SCR24

### ORDERING INFORMATION

EXAMPLE: SCR14-HC/OC-RD201C-A-UN

SERIES	MOUNTING	SIZE*	HOUSING	FRAME	RED/WHITE LED CONFIGURATION*
SC					
	S = Surface	12 = 1x2	HC = 20Ga. CRS Painted	INSET (I) or OVERLAP (O)	SCR12-14:
	R = Recessed (Grid/Flange)	14 = 1x4	HS = 20Ga. SS Brushed	OC = 18Ga. CRS Painted	R1W2 = 1 Red/2 White
		22 = 2x2	HP = 20Ga. SS Painted	OS = 18Ga. SS Brushed	R2W1 = 2 Red/1 White
		24 = 2x4	HA = 16Ga. Alum. Painted	OP = 18Ga. SS Painted	RD2 = 2 Red LEDs
				OA = 16Ga. Alum Painted	RD3 = 3 Red LEDs
				IE = Extruded Alum*	SCR22-24:
				IP = Extruded Alum Painted*	R2W2 = 2 Red/2 White
				IC = 20Ga. CRS Painted	R2W4 = 2 Red/4 White
				IA = 16Ga. Alum Painted	R2W6 = 2 Red/6 White
				IB = 20Ga. SS Brushed	R4W2 = 4 Red/2 White
				IS = 20Ga. SS Painted	R6W2 = 6 Red/2 White
					RD2 = 2 Red LEDs
					RD4 = 4 Red LEDs
					RD6 = 6 Red LEDs

\*Nominal Size.  
Dimensional  
Data on Page  
5.

\*Not IP65. N/A with .187  
Prismatic Poly. Lens.

\*Subject to change. Performance Data on page 3.

COLOR TEMP.	CIRCUITS	LENS	VOLTAGE	OPTIONS
0 = No White LEDs	1C = 1 Circuit*	A = .125 Prismatic Acrylic	12 = 120V	DM = 0-10V dimming with 10-100% range*
35 = 3500°K	2C = 2 Circuits**	B = .125 Prismatic Poly.	27 = 277V	DM1 = 0-10V dimming with 1-100% range*
40 = 4000°K		C = .156 Prismatic Poly.	34 = 347V	FZ1 = Fuse (120V)
50 = 5000°K	*N/A with Red and White configuration. **If only red is specified, it allows for inboard/ outboard control. Red and White circuits will be independently powered.	D = .187 Prismatic Poly.*	UN = Universal (120V-277V)	FZ2 = Fuse (277V)
		E = .125 White Frost Poly.		SD2 = Step Dim. Module (50-100%)**
		G = .140 Prismatic DR Acrylic		SD3 = Step Dim. Module (30-70-100%)**
		H = .125 White Frost Acrylic		EL1 = Emerg. Bat. LED Low (10W)***
		*Cannot be used with IE/IP.		EL2 = Emerg. Bat. LED High (20W)***
				EMI = (EMI) Electromagnetic Interference Filter
				TH = Torx Head screws (with center pin)
				RM = Row Mount****
				90C = 90 CRI (White LED only)
				TGG = Triple Gasketing (Grid)
				TGF = Triple Gasketing (Flange)
				IP66 = IP66 Rated (Overlapping frame only)

\*Dimming for red and white circuits unless otherwise specified.  
 \*\*Consult factory for 347V.  
 \*\*\* SCR12 Remote Battery. Consult factory for CA Title 24  
 options.  
 \*\*\*\* Joiner bracket supplied. Fixture dimensions subject to  
 change. Consult factory for custom wiring or knockouts.

# STARCLEAN SERIES: RED LED

SCS12/SCS14/SCS22/SCS24/SCR12/SCR14/SCR22/SCR24



## PERFORMANCE DATA\*

\*Displayed information is with .125 Prismatic Polycarbonate lens and 80 CRI white LED chip. LEDs are frequently updated therefore values may change without notice.

MODEL	OUTPUT	LUMENS DELIVERED	EFFICACY (lm/W)	INPUT POWER (W)
SC12	RD2 = 2 Red LEDs	700	36	20
	RD3 = 3 Red LEDs	1050	36	30
SC14	RD2 = 2 Red LEDs	1400	36	40
	RD3 = 3 Red LEDs	2100	36	60
SC22	RD2 = 2 Red LEDs	825	43	19
	RD4 = 4 Red LEDs	1675	43	39
	RD6 = 6 Red LEDs	2500	43	58
SC24	RD2 = 2 Red LEDs	1650	42	39
	RD4 = 4 Red LEDs	3250	42	77
	RD6 = 6 Red LEDs	4850	42	116

MODEL	OUTPUT	COLOR TEMP.	LUMENS DELIVERED	EFFICACY (lm/W)	INPUT POWER (W)
SC12	R1W2 1 Red/2 White	3500°K	2875	115	25
		4000°K	3000	120	25
		5000°K	3125	125	25
		RED	350	35	10
	R2W1 2 Red/1 White	3500°K	1438	115	12.5
		4000°K	1500	120	12.5
		5000°K	1563	125	12.5
		RED	700	36	20
SC14	R1W2 1 Red/2 White	3500°K	5750	115	50
		4000°K	6000	120	50
		5000°K	6250	125	50
		RED	700	36	20
	R2W1 2 Red/1 White	3500°K	2875	115	25
		4000°K	3000	120	25
		5000°K	3125	125	25
		RED	1400	36	40
SC22	R2W2 2 Red/2 White	3500°K	3000	120	25
		4000°K	3125	125	25
		5000°K	3250	130	25
		RED	825	43	19
	R2W4 2 Red/4 White	3500°K	6000	120	50
		4000°K	6250	125	50
		5000°K	6500	130	50
		RED	825	43	19
	R2W6 2 Red/6 White	3500°K	8625	115	75
		4000°K	9000	120	75
		5000°K	9375	125	75
		RED	825	43	19

This product was Made in America and complies with the Buy American Act requirements. Specifications and dimensions are subject to change without notice. For additional options and dimensional details, please consult your New Star Lighting representative.

# STARCLEAN SERIES: RED LED

SCS12/SCS14/SCS22/SCS24/SCR12/SCR14/SCR22/SCR24



## PERFORMANCE DATA\*

\*Data is with .125 Prismatic Polycarbonate lens and 80 CRI white LED chip. LEDs are frequently updated therefore values may change without notice.

MODEL	OUTPUT	COLOR TEMP.	LUMENS DELIVERED	EFFICACY (lm/W)	INPUT POWER (W)
SC22	R4W2 4 Red/2 White	3500°K	3000	120	25
		4000°K	3125	125	25
		5000°K	3250	130	25
		RED	1675	43	39
	R6W2 6 Red/2 White	3500°K	3000	120	25
		4000°K	3125	125	25
		5000°K	3250	130	25
		RED	2500	43	58
SC24	R2W2 2 Red/2 White	3500°K	6000	120	50
		4000°K	6250	125	50
		5000°K	6500	130	50
		RED	1650	42	39
	R2W4 2 Red/4 White	3500°K	12000	120	100
		4000°K	12500	125	100
		5000°K	13000	130	100
		RED	1650	42	39
	R2W6 2 Red/6 White	3500°K	17250	115	150
		4000°K	18000	120	150
		5000°K	18750	125	150
		RED	1650	42	39
	R4W2 4 Red/2 White	3500°K	6000	120	50
		4000°K	6250	125	50
		5000°K	6500	130	50
		RED	3250	42	77
	R6W2 6 Red/2 White	3500°K	6000	120	50
		4000°K	6250	125	50
		5000°K	6500	130	50
		RED	4850	42	116

This product was Made in America and complies with the Buy American Act requirements. Specifications and dimensions are subject to change without notice. For additional options and dimensional details, please consult your New Star Lighting representative.

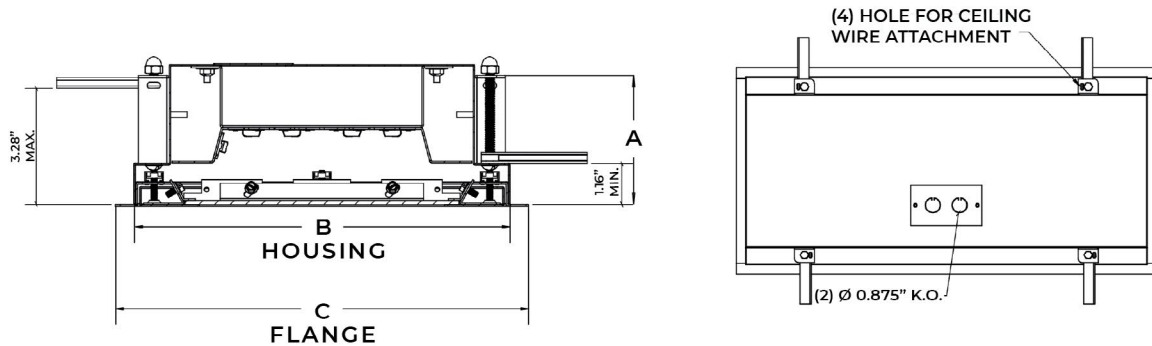
# STARCLEAN SERIES: RED LED

SCS12/SCS14/SCS22/SCS24/SCR12/SCR14/SCR22/SCR24



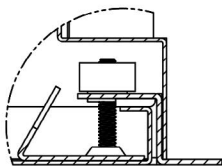
## RECESSED DIMENSIONAL DATA

Fixture weight varies and is dependent upon chosen specifications. Consult factory for additional information. Average weight of the SC14 is 27lb. Average weight of the SC24 is 48lb.

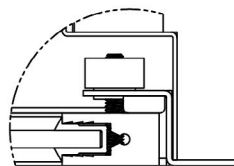


	A	B	C	REC. CEILING CUT-OUT
SCR12	4.00"	10.64" X 22.64"	11.69" X 23.69"	10.88" X 22.88"
SCR14	4.00"	10.64" X 46.64"	11.69" X 47.69"	10.88" X 46.88"
SCR22	4.00"	22.64" X 22.64"	23.69" X 23.69"	22.88" X 22.88"
SCR24	4.00"	22.64" X 46.64"	23.69" X 47.69"	22.88" X 46.88"

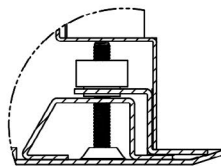
IC FRAME DETAIL



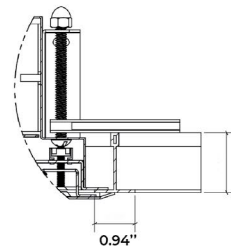
IE FRAME DETAIL



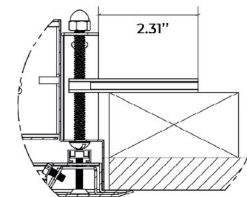
OC FRAME DETAIL



SCR (W/ OC FRAME) RECESSED GRID

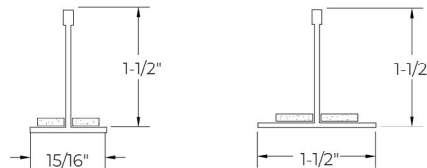


SCR (W/ OC FRAME) RECESSED FLANGE

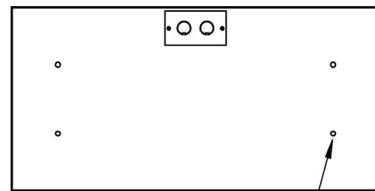
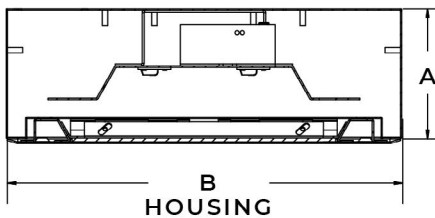


### GRID COMPATIBILITY:

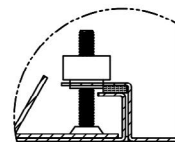
- SCR12: Spaced at 12" x 24" Centers
- SCR14: Spaced at 12" x 48" Centers
- SCR22: Spaced at 24" x 24" Centers
- SCR24: Spaced at 24" x 48" Centers



## SURFACE DIMENSIONAL DATA



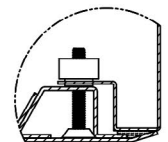
- SCS12: (4) Ø.31" HOLE
- SCS14: (6) Ø.31" HOLE
- SCS22: (4) Ø.31" HOLE
- SCS24: (6) Ø.31" HOLE



INSET FRAME



ALUMINUM EXTRUDED INSET FRAME



OVERLAPPING FRAME

	A	B
SCS12	3.94"	12.00" x 24.07"
SCS14	3.94"	12.00" x 48.07"
SCS22	3.94"	24.00" x 24.07"
SCS24	3.94"	24.00" x 48.07"

This product was Made in America and complies with the Buy American Act requirements. Specifications and dimensions are subject to change without notice. For additional options and dimensional details, please consult your New Star Lighting representative.