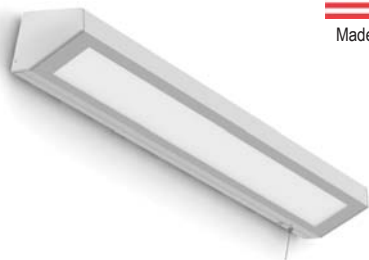


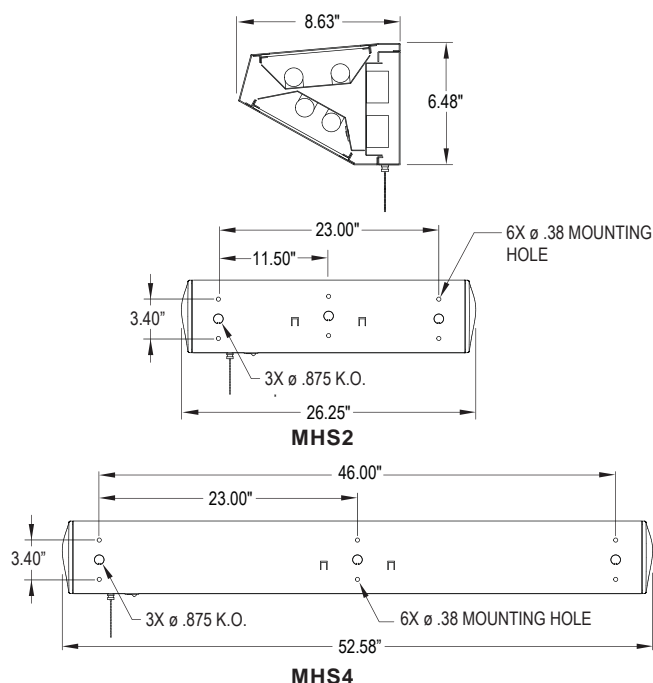
# STARMed MHS 2-4

## HEALTHCARE SERIES

PATIENT ROOM HEAD WALL LUMINAIRE  
WALL MOUNT  
FLUORESCENT



### DIMENSION DATA



### ORDERING INFORMATION

Product Family	Housing	# of Lamps	Lamp Type	Circuits
<b>MHS</b>	<b>HA</b>			
MHS2 8-5/8" x 26-1/4" x 6-1/2"	HA = 16Ga. Aluminum	A = 1 Up / 1 Down B = 1 Up / 2 Down C = 2 Up / 2 Down D = 2 Up / 1 Down	<b>MHS2:</b> 14 = Linear 14W T5 17 = Linear 17W T8 24 = Linear 24W T5 HO	1C = 1 Circuit 2C = 2 Circuits
MHS4 8-5/8" x 52-5/8" x 6-1/2"			<b>MHS4:</b> 32 = Linear 32W T8 28 = Linear 28W T5 54 = Linear 54W T5 HO	

Lens	Voltage	Options
A = .125 Prismatic Acrylic LC3 = .125 White Frosted Polycarbonate	12 = 120V 27 = 277V 34 = 347V ■ UN = Universal (120V-277V)	DM1 = Dimming driver 1% SD2 = Step Dim. Module(50-100%) SD3 = Step Dim. Module(25-50-100%) SD3A=Step Dim. Module(33-66-100%) FZ = Fuse * DB = Dimming Ballast (0-10V) *Δ E1 = Emergency Battery Pack *Δ TH = Torx Head screws (w/center pin) Stainless Steel RF = Radio Interference Filter Δ (one per circuit or ballast)
		LV = Low Voltage Controller Δ, # *(consult factory) for wiring option PW = Pull Chain Switch 4-position (120V Only) # SPB = 6ft. SaniPull Vinyl Ribbon for Pull Switch (Blue) SPR = 6ft. SaniPull Vinyl Ribbon for Pull Switch (Red) LNR = LED Night Light w/ Rocker Switch (120V only) LN = LED Night Light. Consult Δ factory for available color / temperatures. RS = Rocker Switch
		# PW and LV Cannot be used together ■ Consult factory for lamp-ballast options



PROJECT:
TYPE:
PRODUCT:
APPROVED:
DATE:

### FEATURES

The New Star "Star Med MHS4" Healthcare fixture is designed for use in patient room, surgical suites, and medical settings

- Task, Ambient and Reading light in one fixture
- Low profile design
- Durable seam welded aluminum construction
- Decorative rounded end caps
- Easy to clean & maintain
- Removable electrical chassis for easy installation & maintenance
- Dimming Driver (0-10V) standard
- Dimming 1% available
- Available with several switching options
- LED night light available

### APPLICATION

- Hospital
- Patient Rooms
- Dental Procedure Rooms

### SPECIFICATION

#### HOUSING:

16 gauge formed Aluminum seamed welded & ground smooth

#### LENS:

.125Ga. Prismatic Acrylic

#### ELECTRONICS:

Fluorescent:  
Electronic Ballast <10% THD standard. RIF available. Lamps by others.

#### LED NIGHT LIGHT:

Integrated switch allows light selection at 100%,70%,40% and 10% levels

#### GASKET:

Lens gasketed with closed cell neoprene

#### FASTENERS:

Phillips flat head screws with captive cage

#### FINISH:

Matte White Antimicrobial powdercoat finish following an iron phosphate pre-treatment

#### LABEL:



#### Notes:

Specifications and Dimensions are subject to change without notice. For additional options and dimensional details please consult your New Star Lighting Representative. For specific electronic ballast, specify brand and catalog number.



www.newstarlighting.com

02-07-23