

# STARSURGICAL GREEN SERIES: RECESSED (GRID/FLANGE)

SSR12/SSR14/SSR22/SSR24

**SPECIFICATION FEATURES**

**HOUSING:** 20 gauge formed cold rolled steel housing with continuous seam welds. Aluminum and stainless steel options available.

**FRAME:** Inset or overlapping doorframe available in aluminum, cold rolled steel, and stainless steel. Extruded inset door available in anodized aluminum or white painted aluminum. Frame held to housing via aircraft cable

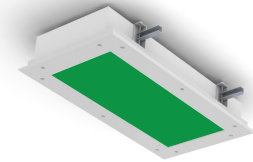
**LENS:** Available with symmetric or asymmetric acrylic with RFI grid. Asymmetric lens serves as inner lens with a .080 white frosted acrylic outer lens for smooth surface. Optional prismatic acrylic or polycarbonate lens installed with smooth side out (does not require additional outer lens). Inset (cold rolled steel, stainless steel and .050 alum). Overlapping frame uses a rail hold down system.

**LED:** Available with green LEDs only or green and white LEDs. Green LEDs will be installed every other row, unless otherwise specified. White color temperatures available in 3500°K, 4000°K, and 5000°K. 0-10V dimming available with 10-100% range and 1-100% range. Must specify dimming under options.

**FASTENERS:** Stainless steel Philips flat head screws with captive cage nuts. Finish to match housing.

**FINISH:** White antimicrobial powder coat finish following multistage iron phosphate pre-treatment.

**GASKET:** Closed cell EPDM and closed cell silicone gaskets prevent air contaminations from entering the fixture.



SSR12

**APPLICATIONS:** Surgical Suites, Operating Rooms, Examination Rooms, Isolation Suites, Laboratories, and more.

**MOUNTING:** Recessed (R) installation. Recessed mounting accommodates Grid and Flange installations. Supplied with adjustable swing arms for Flange applications or taped to the side for Grid applications. Recessed install compatible with 1-1/2" and 15/16" Grid systems. Mounting for custom ceilings available, consult factory.

**LABEL:** Fixture is certified to UL standards for Wet Location (under covered ceiling). IP65 rating. Meets ISO 3/Class 1 Cleanrooms. NSF2 Splash/Non-Food Zone.



**ORDERING INFORMATION**

Example: SSR12-HC/OC-GN2-1C-A-UN

SERIES	MOUNTING	SIZE*	HOUSING	FRAME	GREEN/WHITE LED*
SS	R				
	R = Recessed (Grid/Flange)	12 = 1x2 14 = 1x4 22 = 2x2 24 = 2x4	HC = 20Ga. CRS Painted HS = 20Ga. SS Brushed HP = 20Ga. SS Painted HA = 16Ga. Alum. Painted	INSET (I) or OVERLAP (O) OC = 18Ga. CRS Painted OS = 18Ga. SS Brushed OP = 18Ga. SS Painted OA = 16Ga. Alum Painted IC = 20Ga. CRS Painted IA = 16Ga. Alum Painted IB = 20Ga. SS Brushed IS = 20Ga. SS Painted	SSR12-14: GN2 = 2 Green LEDs GN3 = 3 Green LEDs G1W2 = 1 Green/2 White G2W1 = 2 Green/1 White SSR22-24: GN2 = 2 Green LEDs GN4 = 4 Green LEDs GN6 = 6 Green LEDs G2W2 = 2 Green/2 White G2W4 = 2 Green/4 White G2W6 = 2 Green/6 White G4W2 = 4 Green/2 White G6W2 = 6 Green/2 White

\*Nominal Size. Dimensional Data on Page 3.

\*Subject to change. Data on page 2.

WHITE COLOR TEMP.	CIRCUITS	LENS	VOLTAGE	OPTIONS
0 = No White LEDs 35 = 3500°K 40 = 4000°K 50 = 5000°K	1C = 1 Circuit* 2C = 2 Circuits**  *N/A with Green and White configuration. **If only Green is specified, it allows for inboard /outboard control. Green and White circuits will be independently controlled.	A = .125 Prismatic Acrylic E = .125 White Frosted Poly. H = .125 White Frosted Acrylic R = .125 Prismatic Acrylic (RFI Grid) S = .125 Asymmetric Acrylic with RFI Grid and .080 White Frost diffuser Acrylic (RFI Grid)	12 = 120V 27 = 277V 34 = 347V UN = Universal (120V-277V)	DM = 0-10V dimming with 10-100% range* DM1 = 0-10V dimming with 1-100% range* FZ1 = Fuse (120V) FZ2 = Fuse (277V) SD2 = Step Dim. Module (50-100%) SD3 = Step Dim. Module (30-70-100%) EL1 = Emerg. Bat. LED Low (10W)** EL2 = Emerg. Bat. LED High (20W)** RF = (RFI) Radio Interference Filter TH = Torx Head Screws (with center pin) RM = Row Mount*** 90C = 90 CRI (White LED only) TGG = Triple Gasketing (Grid)**** TGF = Triple Gasketing (Flange)**** IP66 = IP66 Rated (Overlapping frame only)

Notes:  
Specifications and Dimensions are subject to change without notice.  
For additional options and dimensional details please consult your New Star Lighting

\*Dimming for Green and White circuits unless otherwise specified.  
\*\*SSR12 Remote Battery. Consult factory for CA Title 24 options.  
\*\*\*Joiner bracket supplied. Fixture dimensions subject to change.  
Consult factory for custom wiring or knockouts.  
\*\*\*\*Must specify A or E Lens.

# STARSURGICAL GREEN SERIES: RECESSED

SSR12/SSR14/SSSR22/SSR24



**PERFORMANCE DATA\***  
CONTINUES TO PAGE 3

MODEL	OUTPUT	LUMENS DELIVERED	EFFICACY (lm/W)	INPUT POWER (W)
SS12	GN2 = 2 Green Rows	1450	52	28
	GN3 = 3 Green Rows	2200	52	42
SS14	GN2 = 2 Green Rows	2900	52	56
	GN3 = 3 Green Rows	4400	52	84
SS22	GN2 = 2 Green Rows	1375	49	28
	GN4 = 4 Green Rows	2750	49	56
	GN6 = 6 Green Rows	4100	49	84
SS24	GN2 = 2 Green Rows	3250	59	55
	GN4 = 4 Green Rows	6450	59	110
	GN6 = 6 Green Rows	9800	59	165

MODEL	OUTPUT	COLOR TEMP.	LUMENS DELIVERED	EFFICACY (lm/W)	INPUT POWER (W)
SS12	G1W2 1 Green/2 White	3500°K	2875	115	25
		4000°K	3000	120	25
		5000°K	3125	125	25
		Green	725	52	14
	G2W1 2 Green/1 White	3500°K	1438	115	12.5
		4000°K	1500	120	12.5
		5000°K	1563	125	12.5
		Green	1450	36	28
SS14	G1W2 1 Green/2 White	3500°K	5750	115	50
		4000°K	6000	120	50
		5000°K	6250	125	50
		Green	1450	52	28
	G2W1 2 Green/1 White	3500°K	2875	115	25
		4000°K	3000	120	25
		5000°K	3125	125	25
		Green	2900	52	56
SS22	G2W2 2 Green/2 White	3500°K	3000	120	25
		4000°K	3125	125	25
		5000°K	3250	130	25
		Green	1375	49	28
	G2W4 2 Green/4 White	3500°K	6000	120	50
		4000°K	6250	125	50
		5000°K	6500	130	50
		Green	1375	49	28
	G2W6 2 Green/6 White	3500°K	8625	115	75
		4000°K	9000	120	75
		5000°K	9375	125	75
		Green	1375	49	28
	G4W2 4 Green/2 White	3500°K	3000	120	25
		4000°K	3125	125	25
		5000°K	3250	130	25
		Green	2750	49	28
	G6W2 6 Green/2 White	3500°K	3000	120	25
		4000°K	3125	125	25
		5000°K	3250	130	25
		Green	4100	49	84

\*Subject to change without notice. Visit [www.newstarlighting.com](http://www.newstarlighting.com) for additional information and IES files.

Notes:  
Specifications and Dimensions are subject to change without notice.  
For additional options and dimensional details please consult your New Star Lighting

# STARSURGICAL GREEN SERIES: RECESSED

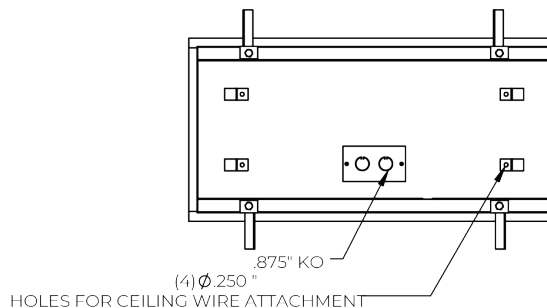
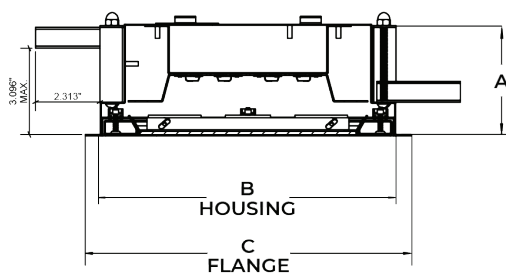
SSS12/SSS14/SSR12/SSR14



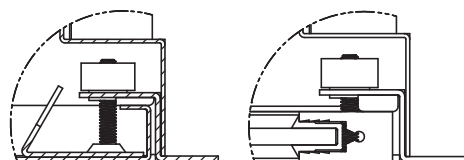
## CONTINUED PERFORMANCE DATA\*

MODEL	OUTPUT	COLOR TEMP.	LUMENS DELIVERED	EFFICACY (lm/W)	INPUT POWER (W)
SS24	G2W2 2 Green/2 White	3500°K	6000	120	50
		4000°K	6250	125	50
		5000°K	6500	130	50
		Green	3250	59	55
	G2W4 2 Green/4 White	3500°K	12000	120	100
		4000°K	12500	125	100
		5000°K	13000	130	100
		Green	3250	59	55
	G2W6 2 Green/6 White	3500°K	17250	115	150
		4000°K	18000	120	150
		5000°K	18750	125	150
		Green	3250	59	55
	G4W2 4 Green/2 White	3500°K	6000	120	50
		4000°K	6250	125	50
		5000°K	6500	130	50
		Green	6450	59	110
	G6W2 6 Green/2 White	3500°K	6000	120	50
		4000°K	6250	125	50
		5000°K	6500	130	50
		Green	9800	59	165

## DIMENSIONAL DATA

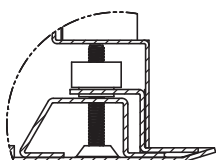


	A	B	C	REC. CEILING CUT-OUT
SSR12	4.00"	10.64" X 22.64"	11.69" X 23.69"	10.88" X 22.88"
SSR14	4.00"	10.64" X 46.64"	11.69" X 47.69"	10.88" X 46.88"
SSR22	4.00"	22.64" X 22.64"	23.69" X 23.69"	22.88" X 22.88"
SSR24	4.00"	22.64" X 46.64"	23.69" X 47.69"	22.88" X 46.88"

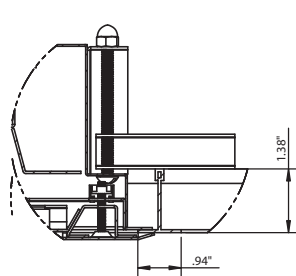


IC FRAME DETAIL

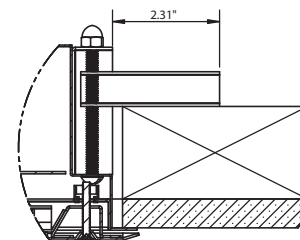
IE FRAME DETAIL



OC FRAME DETAIL



SSR (W/ OC FRAME) RECESSED GRID



SSR (W/ OC FRAME) RECESSED FLANGE

Notes:  
Specifications and Dimensions are subject to change without notice.  
For additional options and dimensional details please consult your New Star Lighting