

## UMW SERIES LED

### UMW2/UMW4

#### SPECIFICATION FEATURES

**HOUSING:** Die formed, seam welded, and ground smooth cold rolled steel or stainless steel clamshell housing. Incorporates a removable reflector unitized with all electrical components for easy installation and maintenance.

**BACKPLATE:** Die formed with contraband drop slot and embossed mounting holes (material and gauge to match housing). Security caulking between ceiling and fixture is not required with this backplate design.

**HINGE:** 16 gauge full length continuous staked piano hinge with welded ends to prevent removal (material to match housing).

**LENS/LENS RETAINER:** Outer and inner lens options secured with "Z" retainers with welded studs spaced six inches apart for maximum strength.

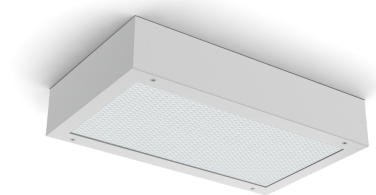
**LED:** Available in three color temperatures 3500°K, 4000°K, and 5000°K with maximum 3-step MacAdam variation allowance. Other color temperatures available, consult factory. Minimum 80 CRI standard. 0-10V dimming available with 10-100% range and 1-100% range. Must specify dimming under options.

**GASKET:** Black neoprene gasket around door frame to prevent light leaks.

**FASTENERS:** Tamper resistant countersunk flat head Torx screws with center pin reject.

**FINISH:** White powder coat finish following a multistage iron phosphate pre-treatment.

UMW2:



**APPLICATIONS:** Correctional, Detention Centers, High Abuse, Max to Supermax Security, Public Areas, Public Housing, Warehouses, and more.

**MOUNTING:** Surface installation. Hardware by others.

**LABEL:** Fixture is certified to UL standards.



#### ORDERING INFORMATION

Example: UMW4-C-L2501C-4/E-UN

SERIES	STYLE	SIZE	GAUGE	LUMEN OUTPUT*	COLOR TEMP.	CIRCUITS
UM						
	W = Wide	2 = 2ft 4 = 4ft	A = 12Ga. CRS Painted B = 14Ga. CRS Painted C = 16Ga. CRS Painted D = 18Ga. CRS Painted E = 14Ga. SS Brushed F = 16Ga. SS Brushed G = 18Ga. SS Brushed H = 14Ga. SS Painted J = 16Ga. SS Painted	L2 = Low L3 = High * Subject to change. Data on Page 2	35 = 3500°K 40 = 4000°K 50 = 5000°K	1C = 1 Circuit 2C = 2 Circuits

OUTER LENS	INNER LENS	VOLTAGE	OPTIONS
0 = No Lens 1 = .187 Clear Poly. 2 = .250 Clear Poly. 3 = .375 Clear Poly. 4 = .500 Clear Poly. 5 = .187 Clear Temp. Glass 6 = .250 Clear Temp. Glass 7 = .375 Clear Temp. Glass* 8 = .500 Clear Temp. Glass* 9 = .750 Clear Temp. Glass*	A = .125 Prismatic Acrylic B = .125 Prismatic Poly. C = .156 Prismatic Poly. D = .187 Prismatic Poly. E = .156 Prismatic Temp. Glass F = .156 Prismatic Acrylic G = .140 DR Acrylic LC3 = .125 White Frosted Poly.	12 = 120V 27 = 277V 34 = 347V UN = Universal (120V-277V)	DM = 0-10V dimming with 10-100% range DM1 = 0-10V dimming with 1-100% range FZ1 = Fuse (120V) FZ2 = Fuse (277V) EL1 = Emerg. Bat. LED Low (1100-1250 lm)* EL2 = Emerg. Bat. LED High (1900-2000 lm)* AH = Allenhead Screws with Center Pin Reject LN = LED Night Light**

\*Must use with 12Ga. or 14Ga.

\*Consult factory for the CA Title 24 options.

\*\*3500°K Night Light with integrated switch allows light levels at 100%, 70%, 40% and 10%.

Notes:  
This product is Made in America and complies with the Buy American Act requirements. Specifications and dimensions are subject to change without notice.  
For additional options and dimensional details please consult your New Star Lighting Representative.

# UMW SERIES LED

## UMW2/UMW4



### PERFORMANCE DATA\*

MODEL	OUTPUT	COLOR TEMP.	LUMENS DELIVERED	EFFICACY (lm/W)	INPUT POWER (W)
UMW2	Low (L2)	4000°K	2750	110	25
	High (L3)	4000°K	4125	110	37.5
UMW4	Low (L2)	4000°K	5500	110	50
	High (L3)	4000°K	8250	110	75

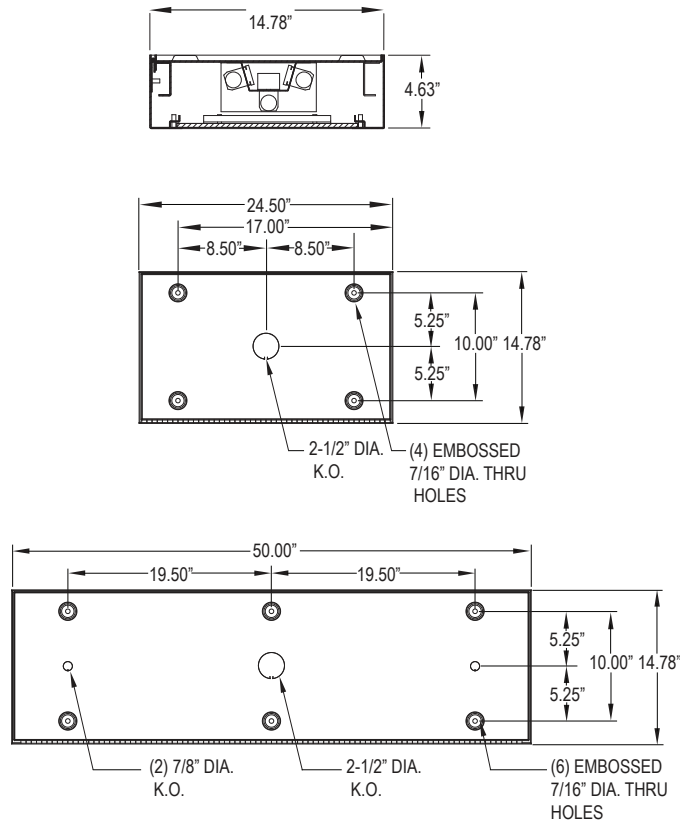
\*Display information is with a .187 clear polycarbonate outer lens/.125 prismatic acrylic inner lens.  
LEDs are frequently updated therefore values may change without notice.  
Visit [www.newstarlighting.com](http://www.newstarlighting.com) for additional information and IES files.

### DIMENSIONAL DATA

Fixture weight varies and is dependent upon chosen specifications.

Average weight of the UMW2 is 35lbs. Average weight of the UMW4 is 65lbs. Consult factory for additional information.

#### UMW:



Notes:  
This product is Made in America and complies with the Buy American Act requirements. Specifications and dimensions are subject to change without notice.  
For additional options and dimensional details please consult your New Star Lighting Representative.